

THIS WEEK

RU Exhibition: Sublime Encounters and Other Worlds



Rotem Reshef, Scroll of Perseverance, 2018, 60x681 in | 1.52x17.3 m (152x1730cm).

Opening: Friday, April 30, 2021

Exhibition Dates: April 30th – May 1st - 11:00 am – 7:30 pm

Residency Unlimited

360 Court Street, Brooklyn, NY 11231

(subway F/G to Carroll Street)

The group exhibition *Sublime Encounters and Other Worlds* features recent and new works realized during the residency by artists **Margrethe Aanstad** (Norway/New York), **Peter Erik Lopez** (New York), **Irene Mamiye** (New York), **Rotem Reshef** (New York/Tel Aviv), and **Paul Wesenberg** (Berlin). The show is curated by **Andrea Bell**.

Sublime Encounters and Other Worlds transports the viewer from the monotony of the everyday to other worlds that are digital and engulfing, dream-like and uncanny, graphic and elevating, infinite and fathomless.

In classical Western aesthetics, the beautiful and the sublime are discrete categories. The beautiful is easily pleasing, it upholds dominant cultural standards of symmetry, naturalism, even availability. It is the object of desire. But when met with the infinite and the unfathomable, the sublime is the experience of confronting the self. Perhaps this is why the sublime has only grown in relevance, while the classically beautiful has fallen away.

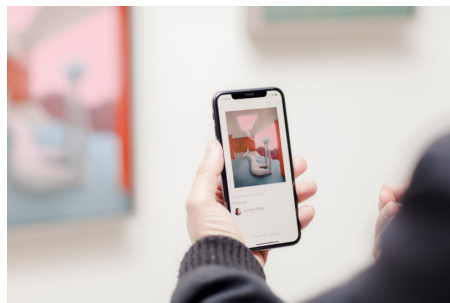
A talk between the artists and curator will be recorded and made available online.

More info [here](#).

UPCOMING

Meet over lunch: Empowering Artists In The Digital Space with Artfare

A talk with curator Daniela Holban



Tuesday, May 4, 2021 at 1:00 pm EST

Zoom Meeting link to follow.

For this talk, Daniela Holban curator at Artfare, will share how Artfare, an artist-driven social marketplace, and community, allows artists to present their work to a broad audience and connect with patrons both digitally and in-person through studio visits, exhibitions, and events. Artfare allows artists to build a loyal and active base of patron collectors and empowers them to sell their work out of their studio. For collectors, Artfare unlocks access to a carefully curated group of artists, compelling

artworks, and unique experiences that facilitate deeper connections with the artwork they purchase. Patrons can follow artists, set up studio visits, meet in person locally and make purchases.

Learn more [here](#).

Donate to Residency Unlimited (RU) and support the exchange of art and ideas through local, national, and international residencies and year-round public programs.

Thank you!

[Donate to RU](#)

Follow RU on [Facebook](#), [Instagram](#) and [Twitter](#) for updates, opportunities, RU Community news, and resources @residencyunlimited.

© 2009 - 2021 Residency Unlimited | 360 Court Street unit #4, Brooklyn NY 11231

[Web Version](#)

[Preferences](#)

[Forward](#)

[Unsubscribe](#)

Powered by [Mad Mimi](#)®
A GoDaddy® company