

For those of us who manage residency programs, it is a bitter sweet experience between the goodbyes (or preferably the “à bientôt(s)”) to artists whose residencies are ending and the welcoming of newcomers whose expectations and excitement are natural boosters...

In May we enthusiastically greet a new roster of artists from the four corners of the world with [Shota Aptsiauri](#) (Georgia), [Nika Ham](#) (Slovenia), [Judit Kis](#) (Hungary), [Angel Ricardo Rios](#) (Cuba /Mexico) as well as the Kentucky based artists [Kristina Arnold](#), [Sandra Charles](#), and [Michelle Burdine](#) who will be working closely with RU's newly appointed Guest Curator [Audrée Anid](#).

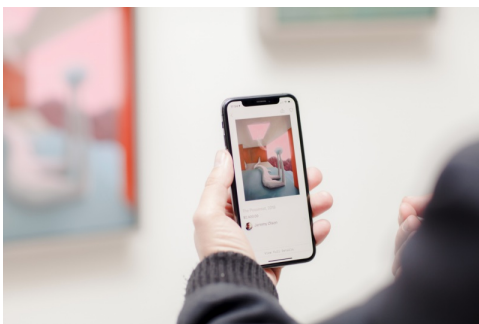
---

## TOMORROW

# Meet over lunch: Empowering Artists In The Digital Space with Artfare

A talk with curator [Daniela Holban](#)

[Add to Calendar](#)



### Virtual Event

**Tuesday, May 4, 2021 at 1:00 pm EST**

Join Talk [Here](#)

Passcode: 067300

For this talk, [Daniela Holban](#) curator at **Artfare**, will share how Artfare, an artist-driven social marketplace, and community, allows artists to present their work to a broad audience and connect with patrons

both digitally and in-person through studio visits, exhibitions, and events. Artfare allows artists to build a loyal and active base of patron collectors and empowers them to sell their work out of their studio. For collectors, Artfare unlocks access to a carefully curated group of artists, compelling artworks, and unique experiences that facilitate deeper connections with the artwork they purchase. Patrons can follow artists, set up studio visits, meet in person locally and make purchases.

Artfare empowers artists to develop and cultivate patron relationships independently from gallery representation. Artfare also offers educational workshops, curated studio tours, in-person exhibitions, and events. Launched in February 2019, Artfare benefits from a growing board of advisors, currently Phong Bui, Neville Wakefield, and Nicola Vassell. They also work with artist-led spaces, nonprofits, and small galleries and have collaborated with organizations such as BRIC, The Brooklyn Rail, NADA, Tamarind Institute, and Assembly Room.

**BIO:**

Daniela Holban is a Curator at Artfare and the Director of Programs at [NOosphere Arts](#). In the past, she has worked with the Metropolitan Museum of Art, MANA Contemporary, {CTS} Creative Thriftshop, William Bennet Gallery, The Ear Classical, and The Fashion and Textile Museum in London.

*This program is supported by public funds from the New York City Department of Cultural Affairs in partnership with the City Council.*



---

## RU Community News



Following RU's group show [Sublime Encounters and Other Worlds](#), find out about the works by featured artists [Margrethe Aanstad](#), [Peter Erik Lopez](#), [Irene Mamiye](#), [Rotem Reshef](#), and [Paul Wesenberg](#) in their conversation with [Andrea Bell](#).

Watch the Video

---



RU 2020 curator **Isabella Indolfi** launches **OPERE VIVE** (Living Works), a project researching the instruments used in public art, ranging from non-profit organizations to internationally renowned universities. Indolfi launched **OPERE VIVE** in Maranola, a small medieval village in southern Italy, and has since traveled to Iceland, Russia, Armenia, Ethiopia, China, South Korea, England and the US. More info [here](#).

---



RU 2020 curator **Abdullah Qureishi** and professor at OCAD university has organized a **virtual exhibition** comprised of art work by students responding to the course material *Making Gender: LGBTIQ2S+ Studio*.

Qureishi takes a studio-based approach to look at LGBTIQ2S+ histories, cultures, and subcultures within the context of contemporary art and critical theory. With a particular focus on BIPOC creative practitioners, the students explore the groundbreaking, experimental, and radical strategies that have informed queer art-making.

---

Donate to Residency Unlimited (RU) and support the exchange of art and ideas through local, national, and international residencies and year-round public programs.

Thank you!

[Donate to RU](#)

Follow RU on [Facebook](#), [Instagram](#) and [Twitter](#) for updates, opportunities, RU  
Community news, and resources @residencyunlimited.

© 2009 - 2021 Residency Unlimited | 360 Court Street unit #4, Brooklyn NY 11231

[Web Version](#)

[Preferences](#)

[Forward](#)

[Unsubscribe](#)

Powered by [Mad Mimi](#)®  
A GoDaddy® company