



natasa prljevic &lt;nprljevic@gmail.com&gt;

---

**RU Newsletter\_February 2019**

1 message

---

**Residency Unlimited** <info@residencyunlimited.org>  
To: NATASA PRLJEVIC <nprljevic@gmail.com>

Fri, Feb 1, 2019 at 4:43 PM

Like Tweet Pin +1 in

**FEBRUARY 2019  
NEWSLETTER**

2019 is a milestone year for Residency Unlimited (RU) that marks the organization's tenth anniversary. We thank you with all our heart for accompanying us throughout this journey. Your continued support is just as crucial in this next phase of development. You may even consider joining **RU's membership program** this year, which would give you exclusive access to RU artists and to our global arts network including during your travels.

---

**DONATE TO RU**

---

2019 is a year where many exciting programmatic developments are set in motion. Thanks to generous governmental funding, we are able to host many more residencies for US and New York based artists whose participation enriches the cultural mix and dialogue engaged with their international peers. Moving in this direction, we are thrilled to announce the participation of a group of exceptional women artists (see list below) in our first thematic residency, **Dirt & Debt** beginning on February 1. Selected by RFP these artists are working at the community level in the global context to reinvent our project of human civilization on a warming planet of finite resources through system drivers of ecology, capital, and community. **Dirt & Debt** is a two-year initiative

spearheaded by the curator Livia Alexander and artist Jane Philbrick. Check out the [Dirt & Debt Suppers Biweekly Series](#) schedule starting this month!

Soon also, we will announce the six winning artists selected from [RU's Open Call](#) for 'New York and US based artists affected by discrimination and marginalization'.

We are very honored that RU was nominated by the [The Shelley & Donald Rubin Foundation](#) as a 2019 grant recipient for the [New York City Artist Safe Haven Prototype](#), a multi-organizational artist residency program to house, integrate and nurture artists at risk. Alongside RU, supporting organizations are Westbeth Artist Community, ArtistSafety.net, Artistic Freedom Initiative (AFI) and PEN's Artists at Risk Connection (ARC).

Another noteworthy project scheduled this coming Spring is a mural commission *Smell in Dialect* made possible by our partner [Kings County Center Hospital](#). Realized by the RU artist [Gabriella Ciancimino](#) for KCHC's Pediatric Unit, the mural will actively engage the hospital's communities and youth with a series of focused workshops.

So please stay tuned, we will be providing you with regular updates as we move forward.

## INCOMING RU RESIDENTS

RU's residency program reopens this month with the launch of *Dirt & Deb*. Participating artists are: [Maryam Monalisa Gharavi](#), [Melissa Marks](#), [Anna Riley](#), [Jessica Segall](#), [Candace Thompson](#), [Luisa Valderrama](#), and [Jenifer Wightman](#).

We also welcome the arrival of fantastic group of incoming international artists: [Emanuel Rossetti](#) (Switzerland), [Heesoo Kim](#) (South Korea), [Igor Bošnjak](#) (Bosnia and Herzegovina), [Martin Penev](#) (Bulgaria), [Shay Arick](#) (USA/Israel), [Shihori Yamamoto](#) (USA/Japan), [Von Calhau!](#) (Portugal) and [Zita Schüpferling](#) (Ukraine). RU's New York Safe Haven resident [Rashwan Abdelbaki](#) (Syria) whose work was recently featured in the group show *Executive (Dis)Order: Art, Displacement, & the Ban* at the Queens Museum continues his residency throughout the year.

And we are thrilled that the curator of the Queens Museum show [Osman Can Yerebakan](#) (USA/Turkey) accepted our invitation to be resident curator.

## FEBRUARY PUBLIC PROGRAMS

-**Feb 5, 1pm Meet Over Lunch:** artist, educator and cultural producer Abdullah Qureshi introduces his project [Mythological Migrations: Imagining Queer Muslim Utopias Through Contemporary Art](#) at RU.

-**Feb 7, 6.30-8.30pm Dirt & Debt Suppers Biweekly Series:** join us for a casual potluck style discussion about art + food systems, featuring guest speaker Allie Wist, at Nutrition and Food Studies, New York University, [411 Lafayette St. 5th Floor](#);

-**Feb 21, 1pm Meet Over Lunch with Adam Yokell**, who will present **Foundwork**, a platform helping to connect artists with curators, gallerists, and other professional collaborators around the world.

### OTHER NEWS

We are grateful to our new partner **Realty Collective** for hosting the exhibition **May Be A Donkey** realized by RU artists **Myriam Casanova** and **Jérôme Stünzi**. On the opening night (January 25), the artists realized a fantastic performance. See [video excerpt](#) and [photo documentation](#) here.

We are proud that RU's 2018 resident curator **Danni Shen** was nominated for the **Art Critic Mentorship Program/AICA** which offers six writers annually the opportunity to work with an established art critic to develop a piece of writing about one of CUE's exhibiting artists. And congratulations to RU alum/NEA Artworks 2017 grantee **Ryan Kuo** for being selected as a 2019 **Pioneer Works 2019 Technology Resident**.

---

## RU Public Programs

### Meet Over Lunch: Abdullah Qureshi



CharBagh (2018), Abdullah Qureshi, mixed and multi-media installation, dimensions variable / exhibited at Uqbar, Berlin.

### Feb 5, 1pm at RU

**Abdullah Qureshi** presents his artistic practice, addressing the significance of the autobiography, traumatic pasts, and sexuality in his painting, along with selected curatorial projects and his ongoing doctoral project 'Mythological Migrations: Imagining Queer Muslim Utopias Through Contemporary Art'.

[READ MORE](#)

---

## Meet Over Lunch: Adam Yokell, Foundworks



**Ambre Kelly and Andrew Gori**

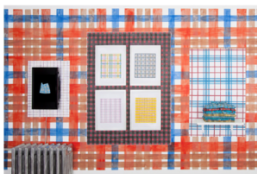
Ambre Kelly is a multi-disciplinary artist and Andrew Gori is a writer and filmmaker. In their spare time, they collaborate together and have co-created projects like the curator-driven art fair [SPRING/BREAK Art Show](#), the production house [The They Co.](#), the publishing house [The Underground Library](#), and the co-operative domestic art collective [BOYFRIENDGIRLFRIEND](#).



**Zac Hacmon**

Born 1981 in Holon, Israel. Lives and works in New York, NY.

2018 MFA, Hunter College, New York, NY. 2012 BFA, Bezalel Academy for Art and Design, Jerusalem, Israel.



**John Richey**

Born in San Diego, CA. Lives and works in Brooklyn, NY.

2004 MFA, University of California-San Diego. BFA, University of Arizona, Tucson.

\*Painting's intersection with or re-construction



**Rachael Starbuck**

Born 1988 in Miami, FL. Lives and works in Austin, TX.

2017 MFA, University of Texas, Austin. BFA, Sculpture and Extended Media, Virginia Commonwealth University, Richmond, VA.

Foundwork Guest Curators Page with recent guests Ambre Kelly and Andrew Gori

**Feb 21, 1pm at RU**

Adam Yokell, the Founder of [Foundwork](#), a new connective platform and resource for artists and collaborators, will introduce the project in the context of system-wide factors that influence the dynamics between artists and professional collaborators across the art field.

[READ MORE](#)

**Dirt & Debt Suppers Biweekly Series: Allie Wist**



"An Experience in Variability" dinner for MIT's Climate Changed conference, 2018. Collaboration between Allie Wist and CafeArtScience.

### **Feb 7, 6:30-8:30pm at Nutrition and Food Studies, New York University**

This casual potluck style discussion about art + food systems, will feature guest speaker **Allie Wist**, an adjunct professor at NYU and The New School, a part-time editor for FoodFuture Co, and a contributor to Saveur magazine.

[READ MORE](#)

## RU Alumni News:

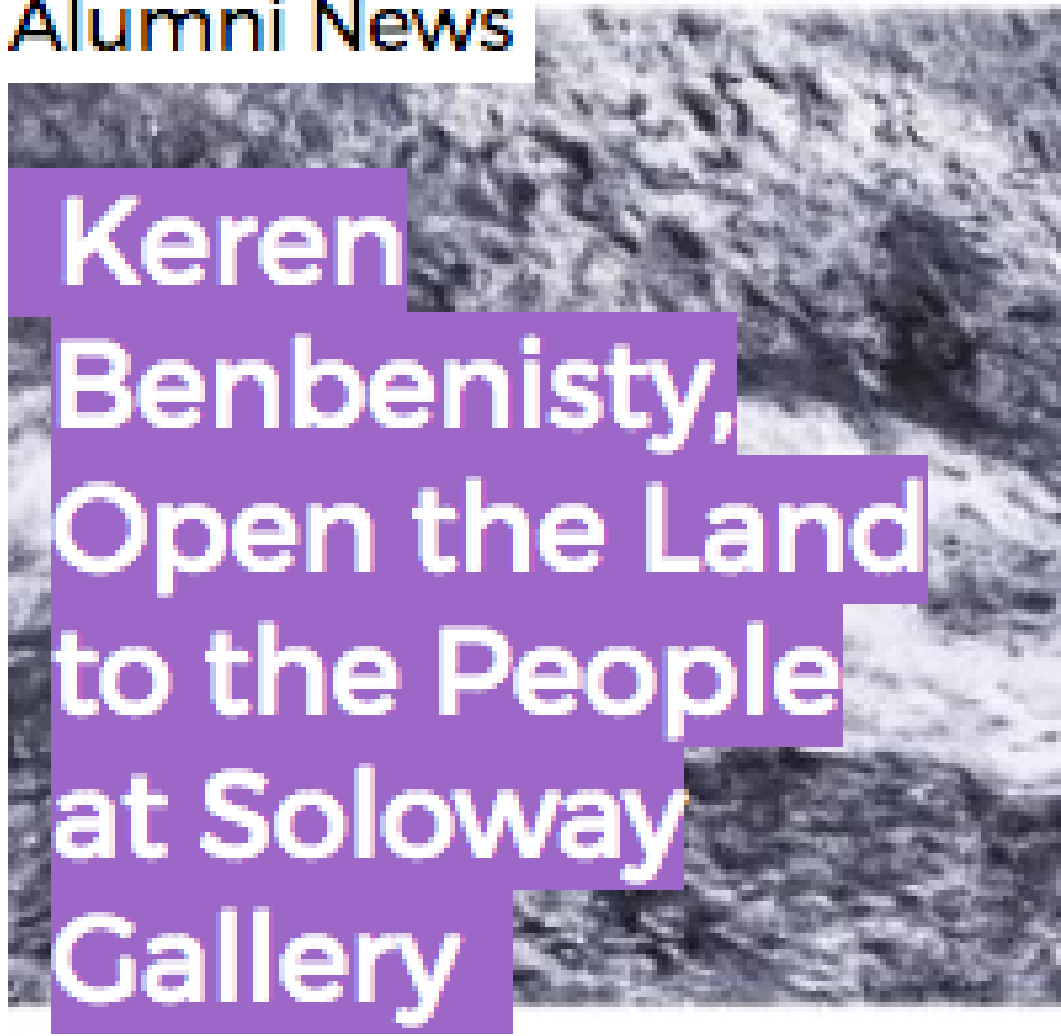
### **UPCOMING EXHIBITIONS:**

2015 RU alum **Wang Tuo**'s first public showing of his newest film **Smoke and Fire** opens at Present Co. on Sat, Feb 2, 7-10pm. Exhibition on view from Feb 2- March 10, 2019.

2010 RU alum **Ana Prvački** is invited by The Fine Arts Museums in San Francisco to lead visitors around the museum to look anew at the building, grounds, and collections, and imagine different ways of viewing, connecting, and behaving with her project **Detour**.

2016 RU alum **Alexandra Dementieva** features **Breathless** in the exhibition **The Power of Intention: Reinventing the (Prayer) Wheel** at the Rubin Museum of Art. On view from March 1 until Oct 14, 2019.

# Alumni News



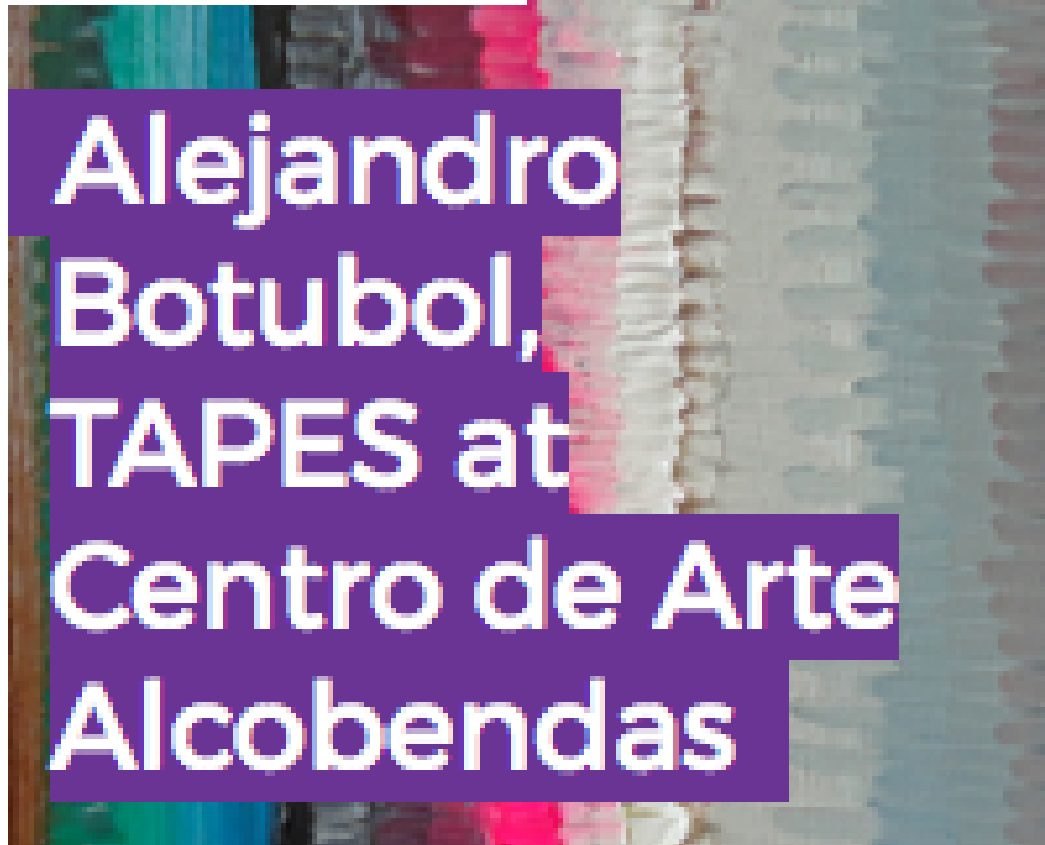
**Keren  
Benbenisty,  
Open the Land  
to the People  
at Soloway  
Gallery**

# Alumni News



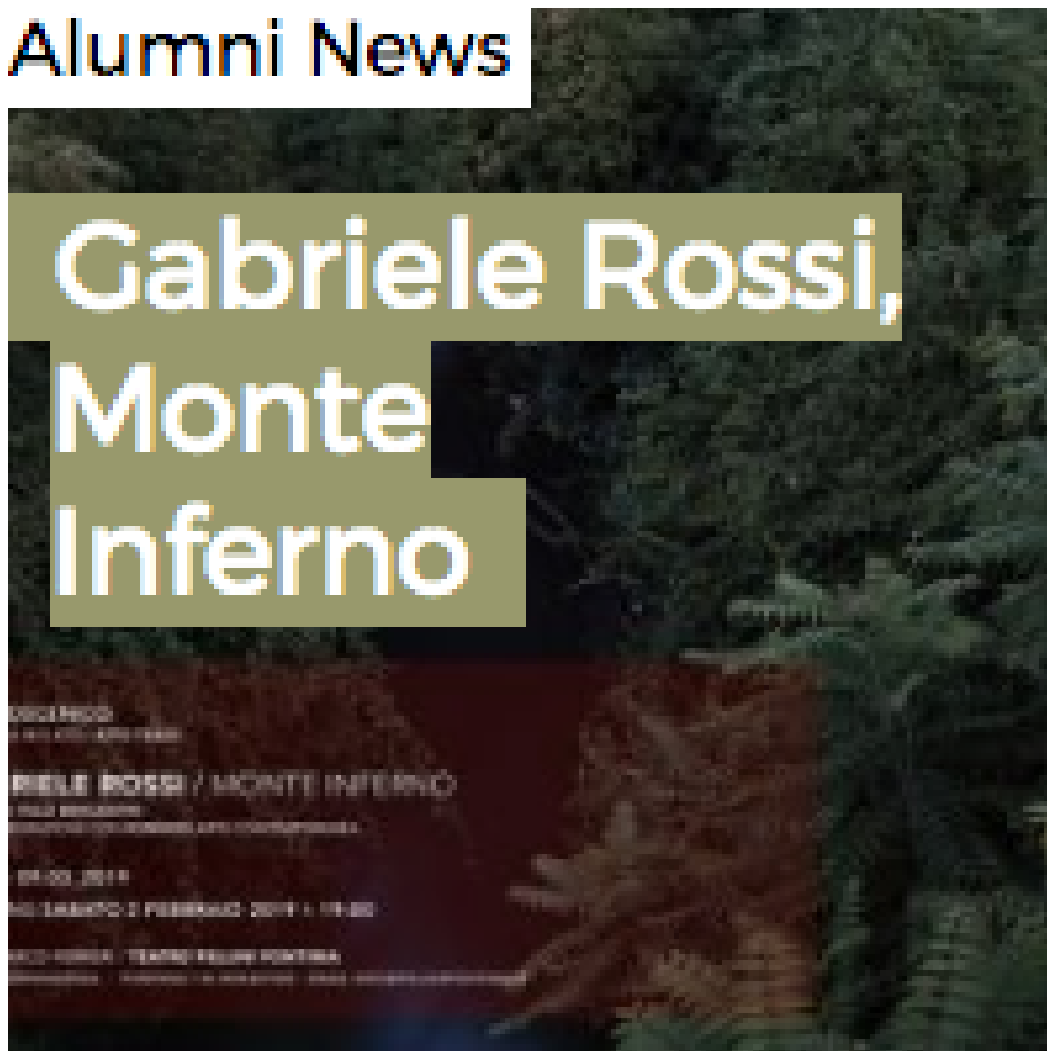


# Alumni News



Alejandro  
Botubol,  
TAPES at  
Centro de Arte  
Alcobendas

# Alumni News



# Alumni News



Mami  
Kosemura,  
Exhibitions at  
Suzhou Jinji  
Lake Art  
Museum &

# Alumni News



**Pedro Wirz,  
Upcoming  
Solo Shows –  
Zürich, Paris  
and Madulain**

# Alumni News



# Alumni News

Naomi Okubo,  
 Artfare  
 inaugural  
 group  
 exhibition/  
 app launch

Anderson, Miya Ando, Kenneth Armistead,  
 Sarah E. Brock, James Ciar,  
 Freleigh, Madonna Frey,  
 Aaron Johnson, Field Kallip,  
 Monique, Penny Morris, Christie Neptane,  
 Jeremy Olson, Shelter Sams, Laura Splen,  
 Wendy White, Dustin Yellin

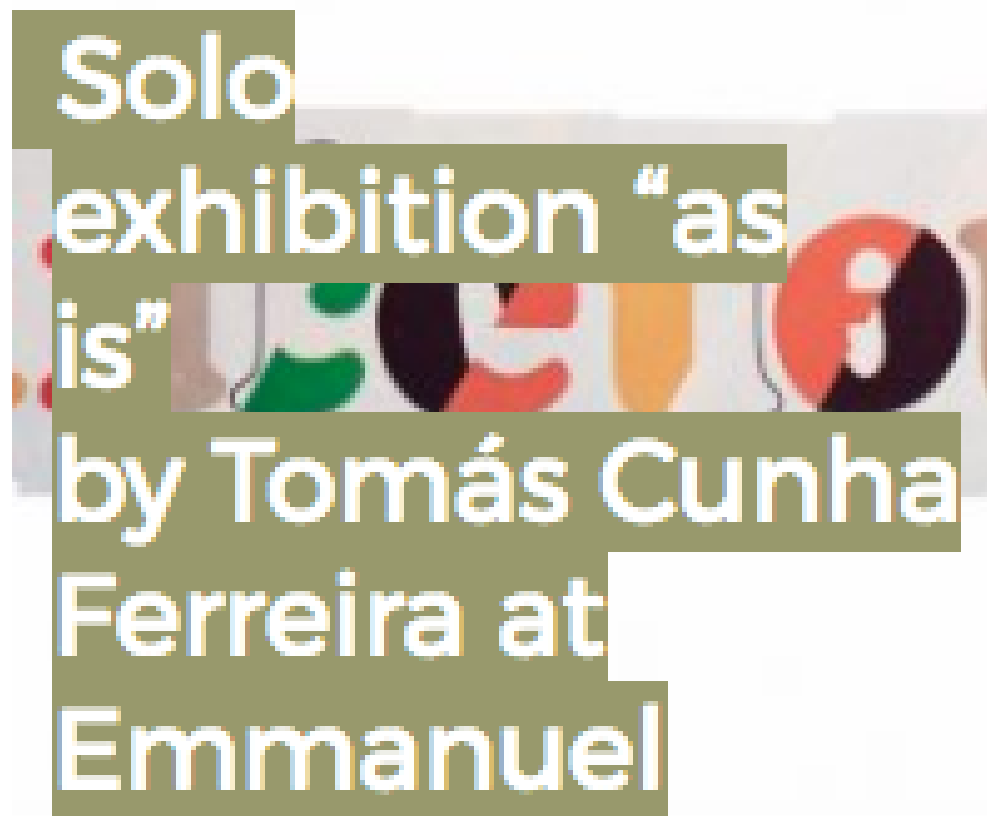
to the public:  
 Feb 1, 10 - 8pm  
 Feb 2, 10 - 8pm  
 Feb 3, 10 - 6pm

# Alumni News



Janine  
Mackenroth &  
Bianca  
Kennedy, To  
the next 100!

# Alumni News



---

[About](#) / [Residencies](#) / [Programs](#) / [RU Opportunities](#)

[Support RU](#) / [Contact Us](#)

© 2009 - 2019 Residency Unlimited | [360 Court Street unit #4, Brooklyn NY 11231](#)

[Web Version](#)   [Preferences](#)   [Forward](#)   [Unsubscribe](#)

Powered by **Mad Mimi**®  
A GoDaddy® company