

With 2018, RU bids farewell/ à bientôt to our beloved co-founder Sebastien Sanz de Santamaria as he pushes forward with **Rivet**, a unified online search platform to help artists of all mediums find residency opportunities worldwide and advance their creative practices. RU is proud to have supported Rivet since its inception in 2016 and we wish it great success!

RU Residency Program

February 1st marks the arrival of an exceptional new group of residents. Please meet the artists **Thomas Canto** (FR), **Tamika Guishard** (NYC), **Clare Kenny** (CH), **Gabriele Rossi** (IT), **Catarina De Oliveira** (PT), **Ramyar Vala** (Iran/Chicago), **Martina Vacheva** (Bulgaria), **Alisha Wessler** (NYC), ACC artist **Juju U** (South Korea), **Hadi Nasiri** (Iran/NYC). We also welcome the curators **Joana P. R. Neves** (PT/UK), **Anna Tome** (NYC), and the ACC fellow **Jianru Wu** (China).

As we kickstart our 2018 programming please join us for these 2 events:

-**Feb 22, 1pm**, Naomi Lev presents **artistsandwriters4ever**, a free online platform that connects artists and writers. Bring sandwiches!

-**Feb 26, 6.30pm**, ***Following the Indexical Line*** by **Joana P. R. Neves**, a discussion about the intricate relations between drawing and photography.

These events will be live streamed on Residency Unlimited's **Facebook Live**.

Other important Announcements

We are proud to announce that RU is awarded \$15,000 from **The Shelley & Donald Rubin Foundation under its Art and Social Justice Initiative** in support of **the New York City Artist Safe Haven Prototype**. This new collaborative residency is designed to provide support to artists who are persecuted on the basis of political affiliations, ethnic, locational, religious, and/or gender-based persecution; artists who need a respite from dangerous situations; or artists from countries experiencing active, violent conflict.

RU is pleased to announce our collaboration with **the Queens Museum Studio Program**, offering **Dakota Gearhart**, **Ryan Kuo**, and **Farideh Sakhaeifar** who recently participated in Residency Unlimited's National Endowment for the Arts (NEA) grant program, an opportunity to hold studio space at the Queens

Museum for six months each starting February. They were selected jointly by RU and Queens Museum staff. [More info here.](#)

Lastly for now, please visit our reformatted platform **DIALOGUES**. Dedicated to critical and theoretical content about the field of art residencies it is now focused on three main sections: (i) scholarly contributions, (ii) panels and (iii) Interviews. [We welcome your ideas here.](#)

RU Public Programs

RU Talk: Naomi Lev presents ArtistsandWriters4Ever

Feb 22 at 1pm at RU

Artists & Writers 4ever

Join us over lunchtime to learn more about [ArtistsandWriters4Ever](#), a platform that offers a work-per-work barter between artists and writes, created by writer and curator Naomi Lev in 2017.

[READ MORE](#)

RU Talk: Joana P. R. Neves: Following the Indexical Line

Feb 26 at 6.30pm at RU

[Joana P.R. Neves](#) discusses her curatorial focus on the intricate relations between drawing and photography. What happens when the line, a



E. J. Marey and G. Demeny at the Station Physiologique", 1887, Marey Museum, Beaune, France.,. Photo: J.-D. Lajoux.

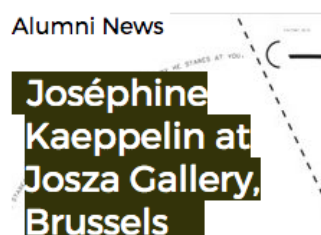
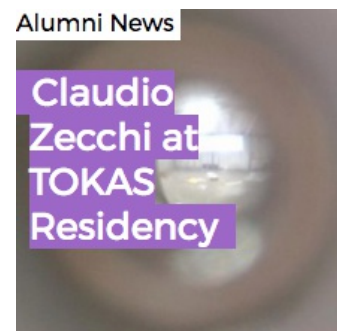
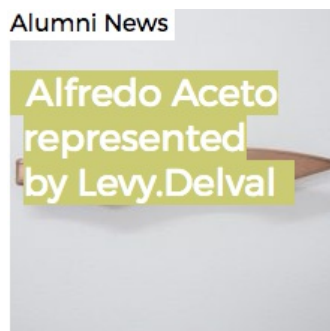
paradigm of drawing and a tool to measure, organize and build, is associated with photography and its concepts?

[READ MORE](#)

RU Alumni News:

If in Cologne, don't miss the chance to visit **Benjamin Brett's** solo exhibition **Orrlando** at MÉLANGE. Brett and the curator **Alexandra Alexopoulou** were part of RU's residency program in 2017. The show is on view until February 18, 2018.

RU alum **Katya Grokhovsky** is appointed lead curator for **Art in Odd Places 2018: BODY**, focused on projects by women, female identifying and non-binary artists (along 14th Street, NY on October 11-14, 2018)



Alumni News

Katya R
Grokhovsky
curates Art in
la Odd Places
2018: BODY

Alumni News

Thibault
Brunet's work
featured in
"Well played"

Alumni News

Naomi Okubo:
Piles of The
Surface at Elsa
Art Gallery
Taipei

**About / Residencies / Programs / RU
Opportunities**

Support RU / Contact Us

© 2009 - 2018 Residency Unlimited | 360 Court Street unit #4, Brooklyn NY 11231

[Web Version](#)

[Forward](#)

[Unsubscribe](#)

Powered by **Mad Mimi**®
A GoDaddy® company